

# Installation Instructions

## SHUVLNOSE® Adaptors



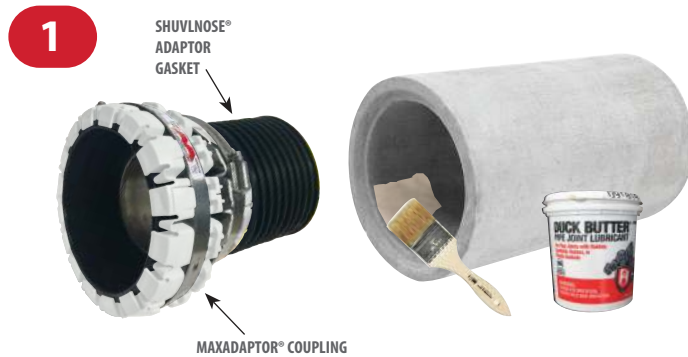
# SNA

SNA Series

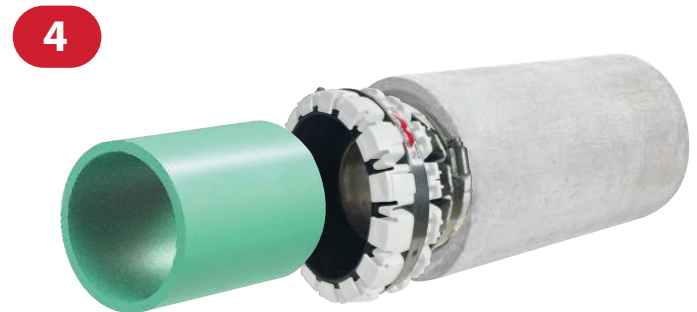
Designed to establish a reliable connection between pipes with similar inside diameters and widely different outside diameters.

### *Installation of ShuvlNose® 4 Adaptors*

- NOTE:**
- ▶ Do not disassemble the coupling from the adaptor
  - ▶ Do not use an impact gun. Proper tightening requires slow speeds
  - ▶ Tension clamp is lubricated to prevent galling during installation
  - ▶ For non-pressure, gravity flow sewer applications only



Apply lubricant to the inner surface contact area of the larger pipe.



Insert the smaller pipe into the MAXADAPTOR® Coupling.



Apply lubricant to the threaded gasket of the ShuvlNose® 4 Adaptor.



Take up all slack in coupling with a cordless drill or socket wrench. Complete the installation by tightening the tension clamps to 80 in/lbs. minimum torque.



Insert the ShuvlNose® 4 Adaptor, and push the gasket fully into the larger pipe.

Gripper Gasket LLC | 1660 Leeson Lane | Corona, CA 92879  
(951) 479-4999

[grippergasket.com](http://grippergasket.com)

REV. 11/22

 **GRIPPERGASKET™**