

# Installation Instructions

## RingGap™ Seal

Universal annular gap pressing system that enables a quick, precise, and construction site-friendly pipe penetration on existing structures.



# RGS

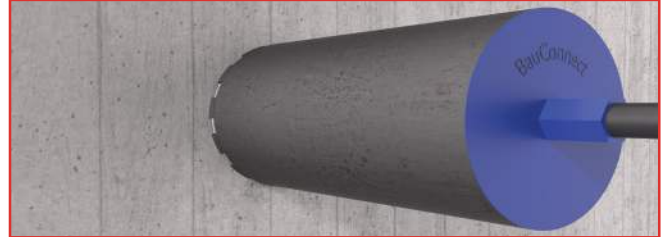
RingGap™ Seal

1

### Coring of the hole:

Core the hole. Ensure the inside surface is smooth and free of debris.

**Note:** Reference the sizing chart on the back to determine the appropriate core bit to be used.



2

### Determining the correct gasket combination:

Reference the sizing chart to determine the correct gasket combination to be used.



**Note:** Pre-packaged with maximum (2) bushings inside the gasket that can be removed depending on the pipe application.

3

### Insertion of the RingGap™ Seal into the cored hole:

A. Insert the RingGap™ Seal into the cored hole.

**Note:** Ensure the red grout segments are fully extended prior to insertion. See the Red Grout Segment Reset Instructions.

B. The black stop bars should be flush with the outside edge of the cored hole upon insertion.

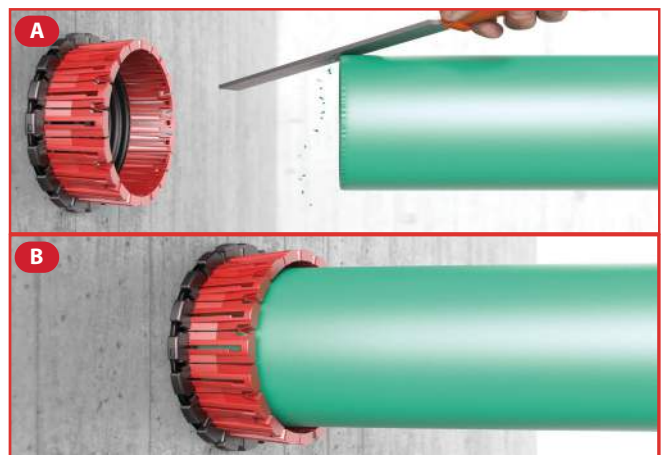


4

### Insertion of the pipe into the RingGap™ Seal:

A. Chamfer cut pipe.

B. Install the chosen pipe through the RingGap™ Seal.



# Installation Instructions

## RingGap™ Seal

Universal annular gap pressing system that enables a quick, precise, and construction site-friendly pipe penetration on existing structures.



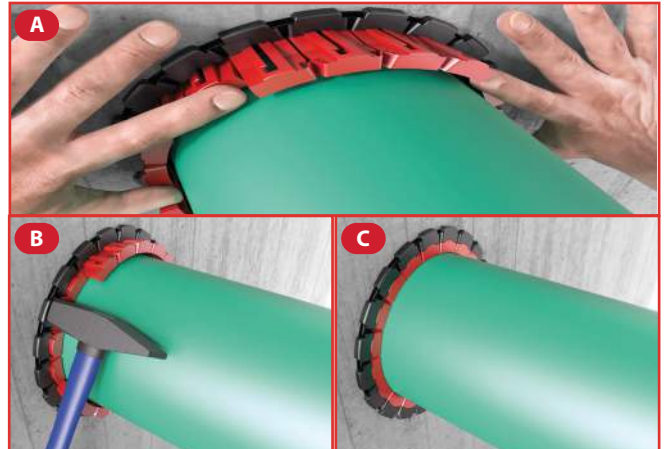
# RGS

RingGap™ Seal

**5**

### Start the pressing process:

- A. Move circumferentially around the RingGap™ Seal, pressing in the red grout segments with thumb and index finger.
- B. Complete the installation with a mallet, driving the red grout segments into the RingGap™ Seal until flush with the black stop bars.
- C. Installation complete!



## RingGap™ Seal

*SDR 35 Plastic / Cast Iron  
SCH 40 Plastic / ABS / Steel  
Copper / Ductile Iron*

Connecting and routing of pipes through structures has never been so **Quick, Easy, and Safe!**

U.S. Patent No. US 11,421,783 B2

SIZE	GG PART	BUSHINGS REQUIRED	DESCRIPTION	PIPE OD	INSIDE CORE DRILLING ID (±0.05")	INSTALLATION DEPTH (Min)
2"	RGS 2	1	1½" SCH 40 PL/ABS/ST/CI & 2" K	1.90" - 2.13"	4.00"	2.50"
	RGS 2	0	2" SCH 40 PL/ABS/ST/CI/XHCI	2.35" - 2.38"	4.00"	2.50"
3"	RGS 3	2	2½" SCH 40 PL/ST	2.88"	5.00"	2.50"
	RGS 3	1	3" K/SDR 35 PL	3.13" - 3.25"	5.00"	2.50"
	RGS 3	0	3" SCH 40 PL/ABS/ST/CI/XHCI	3.35" - 3.50"	5.00"	2.50"
4"	RGS 4	2	4" K/SDR 35 PL	4.13" - 4.21"	6.50"	2.50"
	RGS 4	1	4" SCH 40 PL/ABS/ST/CI/XHCI	4.38" - 4.50"	6.50"	2.50"
	RGS 4	0	4" DI	4.80"	6.50"	2.50"
5"	RGS 5	2	5" SCH 40 PL/ABS/ST	5.56"	8.00"	2.50"
	RGS 6	2	6" SDR 35 PL/CI	6.27"	8.50"	2.50"
6"	RGS 6	1	6" SCH 40 PL/ABS/ST	6.62"	8.50"	2.50"
	RGS 6	0	6" DI	6.90"	8.50"	2.50"
	RGS 8	1	8" SDR 35 PL/SCH 40 PL/ABS/ST/CI/XHCI	8.40" - 8.62"	10.50"	2.50"
8"	RGS 8	0	8" DI	9.05"	10.50"	2.50"
	RGS 10	2	10" SDR 35 PL/CI	10.50"	13.00"	2.50"
	RGS 10	1	10" SCH 40 PL/ABS/ST/XHCI	10.75"	13.00"	2.50"
10"	RGS 10	0	10" DI	11.10"	13.00"	2.50"
	RGS 12	2	12" SDR 35 PL/CI	12.50"	15.00"	2.50"
	RGS 12	1	12" SCH 40 PL/ABS/ST/XHCI	12.75"	15.00"	2.50"
12"	RGS 12	0	12" DI	13.20"	15.00"	2.50"

**Legend:** CI - Cast Iron PL - Plastic ST - Steel K - Copper XHCI - Extra Heavy Cast Iron DI - Ductile Iron

Gripper Gasket LLC | 1660 Leeson Lane | Corona, CA 92879  
(951) 479-4999

[grippergasket.com](http://grippergasket.com)

PAGE 2

REV. 04/24

